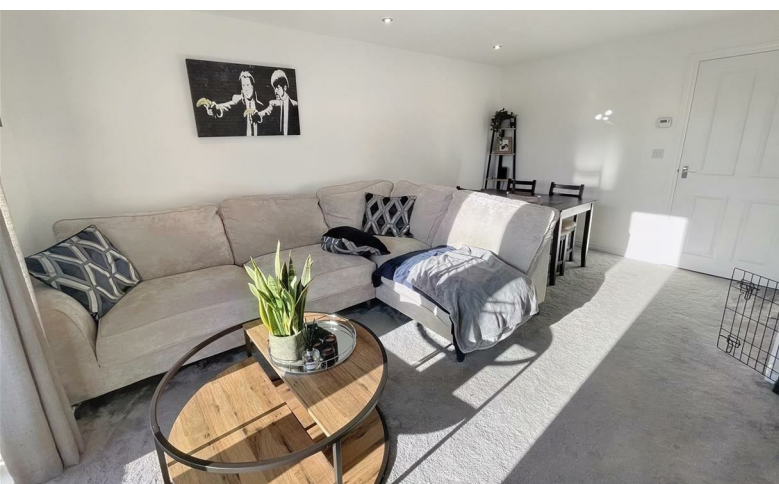


GILMORE ESTATES

Property Sales & Lettings



£165,000

, Jarvis Drive, Ryton, , NE40 4QA

17 Jarvis Drive, Ryton, NE40 4QA

**** END TERRACED HOUSE**** FITTED KITCHEN**** CLOAKS WC**** TWO DOUBLE BEDROOMS**** LANDSCAPED GARDEN**** SIDE ACCESS**** ALLOCATED PARKING SPACE****.

This is a lovely two-bedroom modern end terraced house in the highly sought-after Valley Rise Estate in Crawcrook. The property boasts 2 double bedrooms one with full length fitted wardrobes. There is a cloaks Wc downstairs and a private West Facing rear garden.

EPC RATING B

Entrance Hallway

7'0" x 17'5" (2.15 x 5.31)

Composite entrance door to hallway, central heating radiator, stairs to first floor and open plan to kitchen.

Kitchen

6'5" x 10'7" (1.97 x 3.24)

Wall and base units with laminate work surfaces, integral oven with gas hob and extractor hood, integrated washing machine, 1.5 stainless steel sink and drainer with mixer tap, integrated fridge / freezer, cupboard housing boiler and Upvc window to front aspect.

Cloaks WC

5'1" x 3'3" (1.55 x 1.00)

WC, pedestal wash hand basin, Upvc window to side aspect and extractor fan.

Lounge

16'0" x 13'0" (4.88 x 3.97)

Upvc French doors to rear garden, understairs cupboard, inset spotlights and central heating radiator.

First Floor Landing

6'8" x 6'7" (2.04 x 2.02)

Loft access to boarded loft space.

Bedroom One

10'11" x 11'2" (3.33 x 3.42)

Upvc window to rear aspect with plantation shutters,

fitted high gloss wardrobes to one wall, inset spotlights and central heating radiator.

Bedroom Two

8'4" x 13'1" (2.56 x 3.99)

Two Upvc double glazed windows to front aspect, linen cupboard and central heating radiator.

Bathroom

6'1" x 6'7" (1.87 x 2.02)

White suite comprising of bath with chrome taps and combi fed shower over, glazed screen, WC, Pedestal wash hand basin, chrome towel rail, laminate splashbacks and extractor.

Garden

Paved patio to rear with artificial lawn

Parking

Allocated parking to the front.

Credit References and Deposit

Prospective tenants will be required to complete a credit referencing application payable whether successful or not. Prior to taking occupation of the property you will be required to pay a deposit of 1½ times the monthly rent, the first months rent in advance and an administration fee.

Directions

